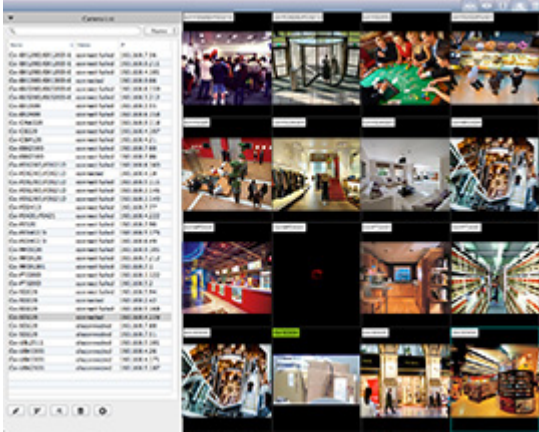


GV-Edge Recording Manager (Mac Version)



INTRODUCTION

GV-Edge Recording Manager is a tool designed for recording management of remote GV-IP Cameras and GV-Target Cameras. It is an integrated interface from which you can assess live view, assign recording to NAS servers, enable recording, play back videos and view storage space without visiting each host's Web interface. Any connection with hosts can be disabled without affecting or stopping the hosts' normal functioning.

GV-Edge Recording Manager also supports live view display and video playback of hosts connected to GV-Video Server, GV-VMS and GV-Recording Server.



Note: GV-Recording Server is not supported for playback at GV-Edge Recording Manager.

Assigning Recording to NAS Servers

Through GV-Edge Recording Manager, you can have GV-IP Cameras or GV-Target Cameras record to NAS servers and also view the storage information such as the occupied space and remaining space. GV-NAS Systems are also available at your choice.



Features

- Display up to 32 channels for free
- On-demand display for dual channels
- Fisheye dewarping
- Manual snapshot
- Enable and disable host recording for GV-IP Devices
- Host storage assignment to NAS servers for compatible GV-IP Devices
- Remote playback
- Batch IP address assignment
- PTZ control
- One-way audio
- Import and export of system configuration
- View storage information (free and occupied space) for GV-IP Devices

Minimum System Requirements

OS Supported		OS X 10.9 or later
Mac PC	32 channels (with Dual Streams)	Mac mini (Core i5-3210M, 8 GB RAM)

Compatible GeoVision IP Devices and Software

GV-IP Devices		Supported Version
GV-IP Camera		V3.00 or later
GV-IP Speed Dome	GV-SD220	V1.04 or later
	GV-SD220-S	
GV-Target Camera		V1.02 or later
GV-Video Server	GV-VS11	V1.03 or later
	GV-VS12	V1.07 or later
	GV-VS14	V1.01 or later
GV-Software		Supported Version
GV-Recording Server		V1.2.4.0 or later
GV-VMS		V14.10 or later

Note:

1. Recording to GV-NAS Systems is only supported by GV-IP Camera and GV-Target Camera of the specified versions.
2. Files recorded to GV-NAS Systems are stored in the MPEG4 format and those recorded to memory cards are stored in the AVI format.

Currently, the Mac version of GV-Edge Recording Manager does not support GV-System (GV-DVR / NVR). It will support GV-System (GV-DVR / NVR) in the near future.

Specifications

Supported Hosts		
GV-VMS		Unlimited
GV-Recording Server		
GV-IP Camera		
GV-Target Camera		
GV-SD220/220-S		
GV-Video Server		
Live View		
No. of Channels		32
GV-Target Camera		V1.02 or later
Window Division		4, 9, 16, 36
Display Mode		Fisheye dewarping, zoom, snapshot
Audio		One-way
PTZ		Pan, tilt and zoom
Host Recording (Monitoring)		Enable/disable monitoring of a single host or all hosts (for GV-IP Devices)
Channel Status Indicator	Yellow	Not under monitoring
	Green	Under monitoring but not being recorded
	Red	Under monitoring and is being recorded
Host Batch Management		NAS setup, IP address configuration (for GV-IP Devices)
Note: NAS setup is supported by GV-IP Camera (firmware V3.0 or later) and GV-Target Camera (firmware V1.02 or later).		
Playback		
No. of Remote Playback windows		1
Others		
Language		Bulgarian / English / French / German / Hebrew / Italian / Japanese / Russian

Note: All specifications are subject to change without prior notice.

Options

GV-NAS System	GV-NAS System is a Linux-based, network attached storage device designed to store GV-IP Camera and GV-Target Camera recordings.
---------------	---